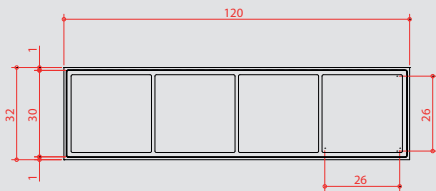




Wood Hybrid Systems

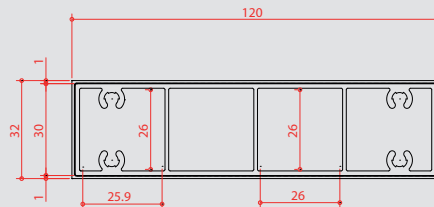
Datasheet 120x32 mm

Soleo 12



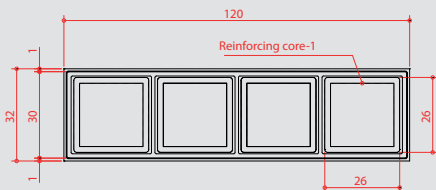
Weight per 1m (in kg):	1.76
Secondary moment Ix (in cm ⁴):	5.53
Secondary moment Iy (in cm ⁴):	12.55
Moment of Inertia Zx (in cm ³):	8.29
Moment of Inertia Zy (in cm ³):	74.04

Soleo 13



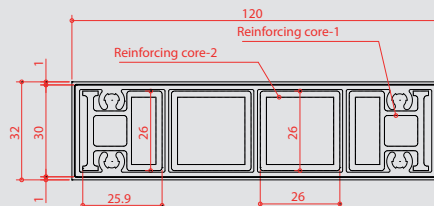
Weight per 1m (in kg):	2.08
Secondary moment Ix (in cm ⁴):	6.45
Secondary moment Iy (in cm ⁴):	17.05
Moment of Inertia Zx (in cm ³):	9.67
Moment of Inertia Zy (in cm ³):	100.61

Soleo 14 (with reinforcing core)



Weight per 1m (in kg):	3.84
------------------------	------

Soleo 15 (with reinforcing core)



Weight per 1m (in kg):	4.30
------------------------	------

Colours:
Teak, Rosewood, Paldao, Ebony

WPC Thickness:
1 to 2 mm

Fire rating:
M2

Core:
Anodized aluminium

Geolam[®]
Architectural Eco-Technology

Geolam Management GmbH
Dufourstrasse 55
8702 Zollikon
Switzerland

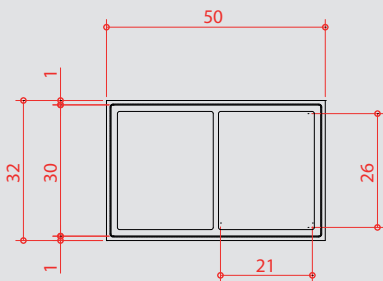
P +41 (0)55 511 07 00
service@geolam.com
www.geolam.com



Wood Hybrid Systems

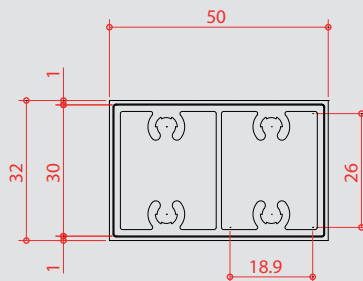
Datasheet 50x32 mm

Soleo 16



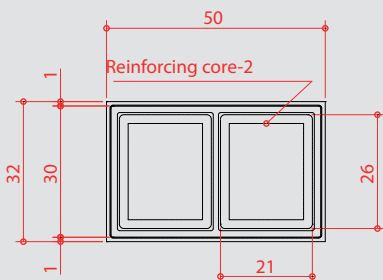
Weight per 1m (in kg):	0.87
Secondary moment Ix (in cm ⁴):	2.41
Secondary moment Iy (in cm ⁴):	2.98
Moment of Inertia Zx (in cm ³):	3.62
Moment of Inertia Zy (in cm ³):	7.14

Soleo 17



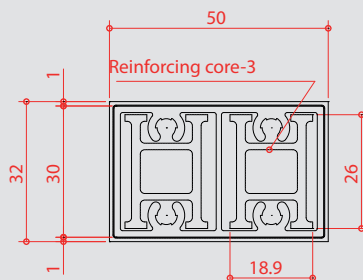
Weight per 1m (in kg):	1.19
Secondary moment Ix (in cm ⁴):	3.33
Secondary moment Iy (in cm ⁴):	3.73
Moment of Inertia Zx (in cm ³):	5.00
Moment of Inertia Zy (in cm ³):	8.96

**Soleo 18
(with reinforcing core)**



Weight per 1m (in kg):	1.79
------------------------	------

**Soleo 19
(with reinforcing core)**



Weight per 1m (in kg):	2.07
------------------------	------

Colours:

Teak, Rosewood, Paldao, Ebony

WPC Thickness:

1 to 2 mm

Fire rating:

M2

Core:

Anodized aluminium

Geolam[®]

Architectural Eco-Technology

Geolam Management GmbH
Dufourstrasse 55
8702 Zollikon
Switzerland

P +41 (0)55 511 07 00
service@geolam.com
www.geolam.com